

# BS50+ SERIES / RAsTar 3000

Standard Product Data Sheet

**BOGAZICI**

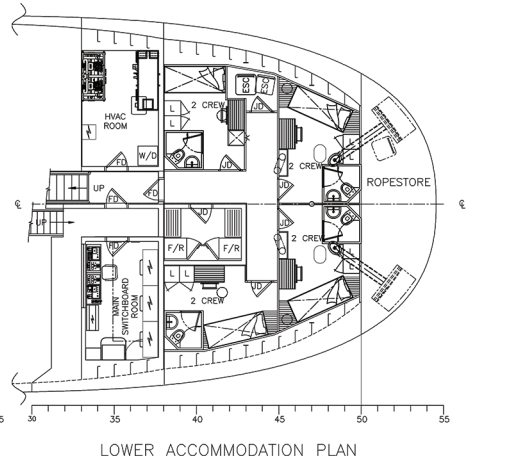
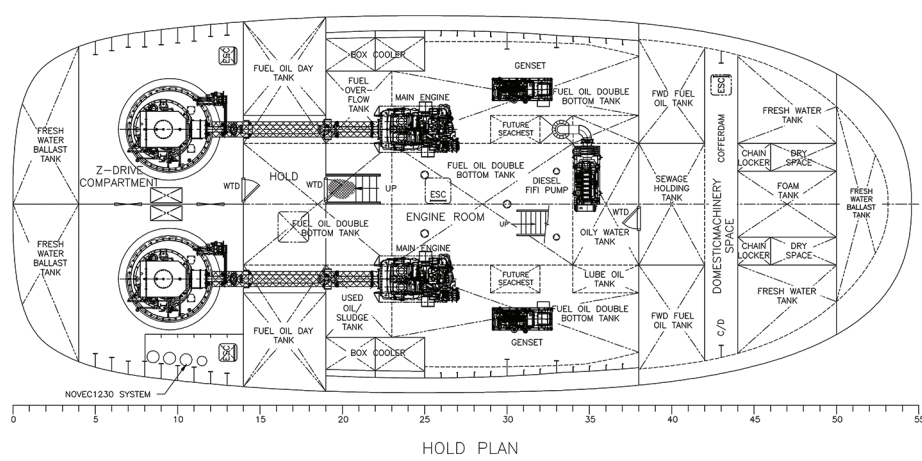
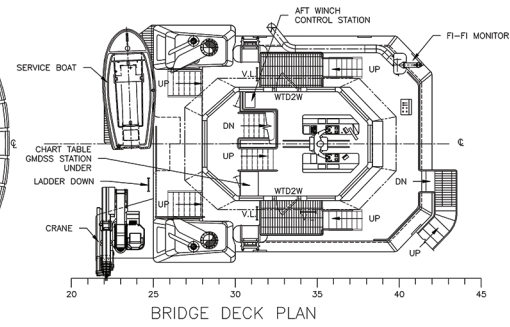
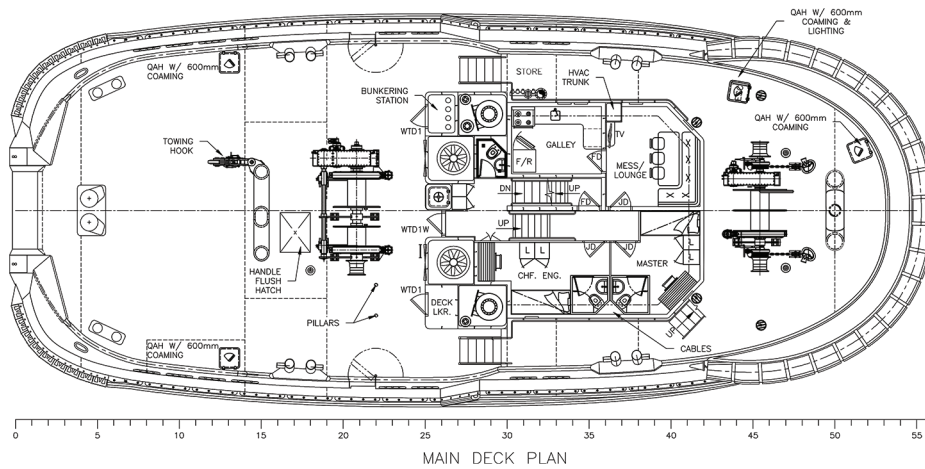
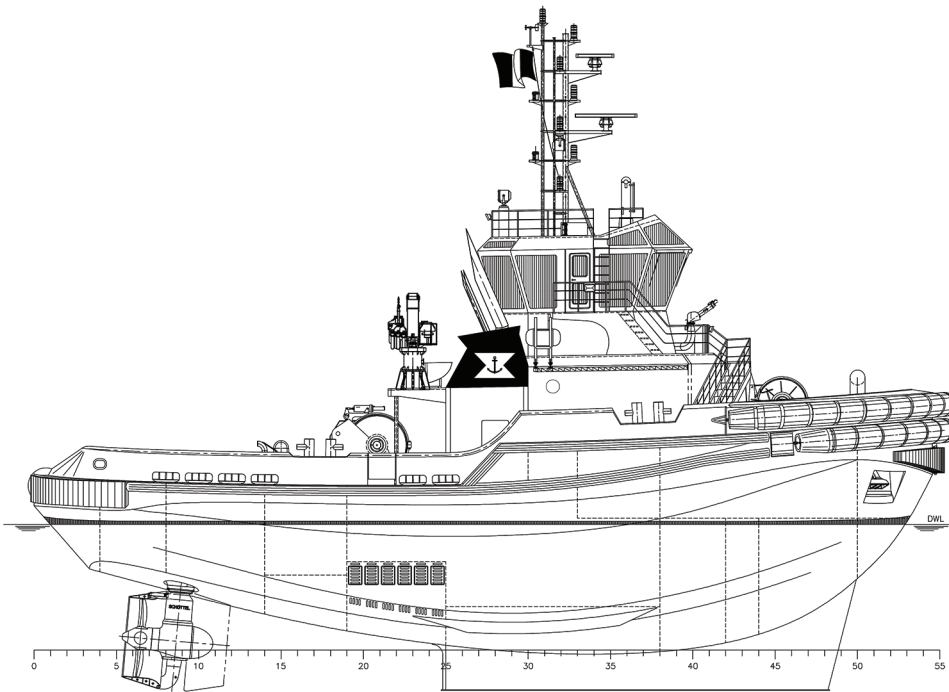


TYPE	: ASD ESCORT TUG BOAT	Fire Fighting System	: Aksis Fire Fighting System, Class Notation - FiFi E (600 m <sup>3</sup> /h)
Designer	: Robert Allan Ltd. / Canada	Sewage Treatment Unit	: Peco Facet, Type STP 0.5, 0.6 m <sup>3</sup> /hr capacity
Length Overall	: 30.00 m	Bilge Water Separator	: Peco Facet, Type CPS-2,5B MKII + EBM 14x1, 0.5 m <sup>3</sup> /hr flow
Breadth Moulded	: 12.60 m	Fuel Oil Separator	: Alfa Laval, Type MAB 103 B-24
Depth Moulded	: 5.52 m	Air Compressor	: Ervor, Type G04, 7.2 m <sup>3</sup> /hr, approx. 10 bar with 250 lt 16.5 bar Air Bottle
Draft, Maximum	: 5.60 m	Search Light	: Seematz, 2 x Type EFA, 1000 Watt
Complement	: 10	Navigation / Communication	: GMDSS Area A3
Capacities (approx.)	: - Fuel : 202 m <sup>3</sup> - Fresh Water : 25 m <sup>3</sup> - Foam : 16 m <sup>3</sup>	Deck Machinery	: C.Kraaijeveld B.V. -Single Split Drum Escort Towing Winch, Drum Capacity; 2 x 200 m x 72 mm dia Euroflex rope Drum Pull = 35 T (1st layer) Drum Brake Holding = 125 T (static)  -Double Drum Aft Towing Winch, Drum Capacity: 600 m + 400 m x 38 mm dia steel wire Drum Pull = 35 T (1st layer) Drum Brake Holding = 125 T (static)  -Tow Pins -Towing Hook ; SWL 70 tons, quick release disc type, -Stern Roller
Free Running Speed	: 12.5 knots (min)	Deck Crane	: Denizsan, Type DS12K4, Knuckle Deck Crane, 1000 kg at 12.0 m.
Bollard Pull	: 55 tonnes	Paint System	: International (Five years system)
Services / Capabilities	: Berthing and unberthing of vessels at harbour premises Ship-Assist Escort Operation Open sea and Coastal Towing Pull and push during vessels mooring manoeuvrings External Fire-Fighting		
Classification Society	: Bureau Veritas		
Classification	: I + HULL + MACH, Escort Tug; Unrestricted Navigation, Fire-Fighting Ship E (600 m <sup>3</sup> /h); + AUT-UMS, IWS		
Main Engine	: MTU, 2 x Type 12V4000M63, 1500 kW, 1800 rpm		
Propulsion	: Schottel, 2 x Type 360 FP Azimuth Thruster		
Diesel Generators	: Baudouin, 2 x Type 6W105S, 99 kW Ship Service DG Sets		

Specification, Equipment Manufacturers and GA Plan of the vessel could be tailored fully as per Buyers' requirements.

# BS50+ SERIES / RAsTar 3000

Standard Product Data Sheet



Specification, Equipment Manufacturers and GA Plan of the vessel could be tailored fully as per Buyers' requirements.