

# BUNKER BARGE / 1600 m<sup>3</sup>

## Standard Product Data Sheet



TYPE	: BUNKER BARGE
Loa (excl. fenders)	: 56.90 m
Breadth (excl. fenders)	: 14.00 m
Depth	: 4.50 m
Service Draft	: 3.50 m
Tank Volume	: 1600 m <sup>3</sup>

### Tank Volumes (approx.)

Cargo MDO Tanks	: 404 m <sup>3</sup>
Cargo HFO Tanks	: 1203 m <sup>3</sup>
MDO Daily Tanks	: 39 m <sup>3</sup>

Classification Society	: RINA
Notation	: C + HULL, OIL BARGE (F.P. >60 OC) International Coastal Navigation

### Pump Room Equip.

Diesel Gen. Set (2 off)	: 80 kWe, 100 kVA, 400 V, 50 Hz, IP23
Diesel Engine (2 off) for HFO Cargo and Hyd. Pumps	: 136 kWm @ 2100 rpm, 24 V DC Electric start, Sea Water Cooled, Diesel Engine with ;

Clutch (2 off) for HFO Cargo and Hyd. Pumps	: 136 kWm @ 2100 rpm manual operated Clutch Two dedicated outlets for HFO Cargo Pump and Hyd. Pump
---	---

Diesel Driven Hydraulic Power Pack	: Diesel Driven Hydraulic Pump (2 off) approx. 74 m <sup>3</sup> each, variable displacement with load sensing, driven by independent Diesel Engine via Clutch.
------------------------------------	---

### Cargo Pumps

HFO Cargo Pumps (2 off)	: Gear Type 250 m <sup>3</sup> /h @ 5 bar, 90 kW, driven by independent Diesel Engine via clutch.
-------------------------	---

MDO Cargo Pumps (2 off)	: Centrifugal Type 100 m <sup>3</sup> /h @ 5 bar, 22 kW, Electric driven.
-------------------------	---

### Pumps

Ballast/Fire Pumps (2 off)	: Electrical driven, 100-50 m <sup>3</sup> /h each @ 2 – 4 bar, 11 kW
Bilge Pump (1 off)	: Electrical driven, 2 m <sup>3</sup> /h @ 2 bar, 1.5 kW
Sludge Pump (1 off)	: Electrical driven, 2 m <sup>3</sup> /h @ 2 bar, 1.5 kW
Pump Room Ventilation	: Ventilation Fans (2 off), 20.000 m <sup>3</sup> /h each for ventilation and cooling of the pump room.

Bow Thruster	: 160 kW (217 Hp), hydraulic driven, fixed pitch propeller with local control located in deck house and radio remote control.
--------------	---

### Deck equipment

Capstan (2 off)	: Hydraulic driven, 7 tons at 13 m/min. with local hydraulic control.
Hose Crane (1 off)	: Electro-hydraulic driven, SWL 1 ton at 18 m. with electrical extension remote control on the main deck.
Double Bits (3 off)	: At each side of the vessel, SWL 30 Tons.
Single Bit (3 off)	: On fwd, SWL 30 Tons
Single Bit (1 off)	: On aft, SWL 30 Tons

Ballast Water Treatment Plant	: Ballast Water Treatment Plant with capacity 100 m <sup>3</sup> /h will be fitted in the pump room.
-------------------------------	--

### Fenders

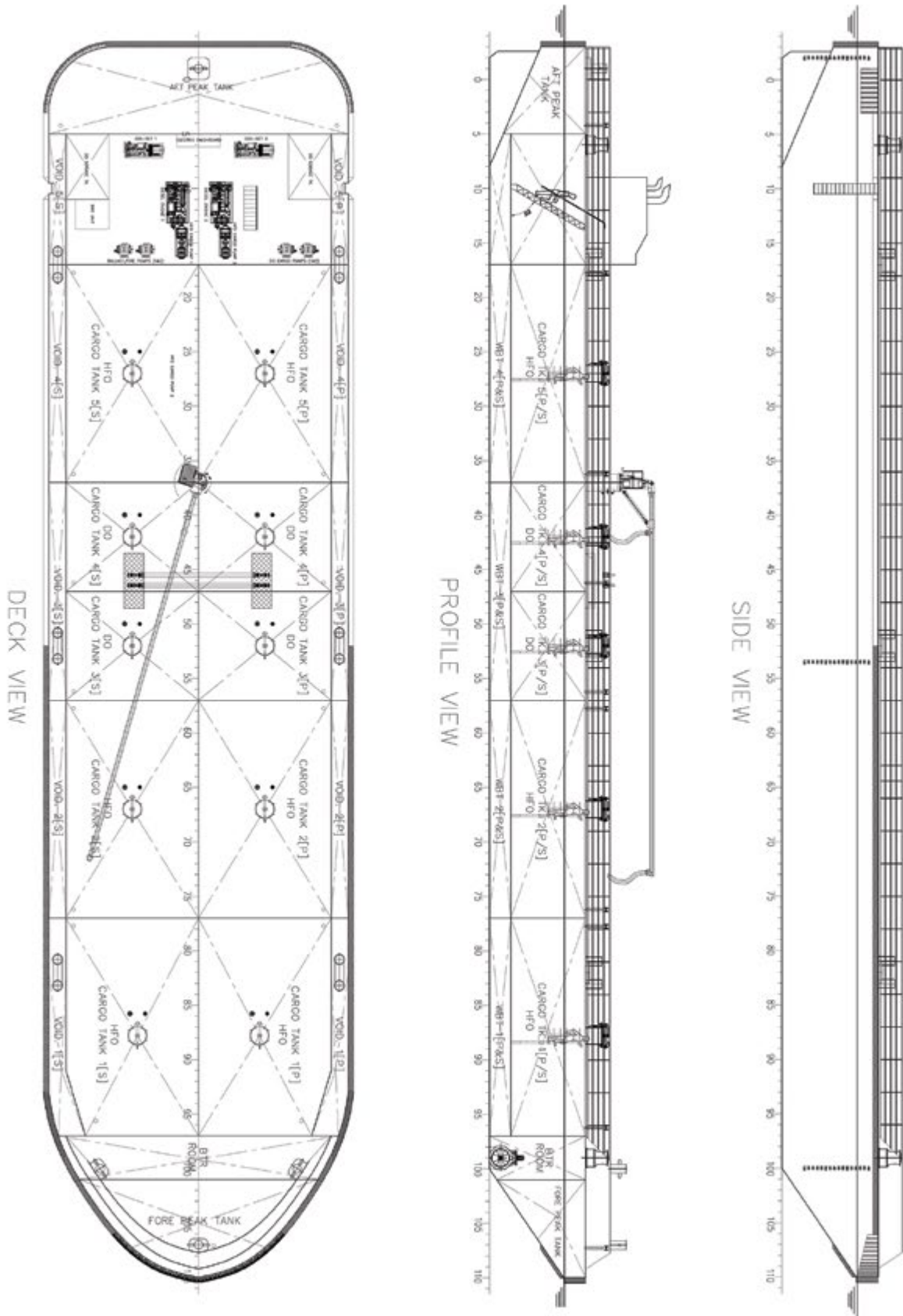
Fore	: W fenders, 400x250 mm
Aft Corners Port & Stb'd	: W fenders, 400x250 mm
Port & Stb'd	: D fenders, 250x250 mm
Port & Stb'd	: Half round pipe, DN 250 – SCH 40

Paint	: 5 years system for hull.
-------	----------------------------

Specification, Equipment Manufacturers and GA Plan of the vessel could be tailored fully as per Buyers' requirements.

# BUNKER BARGE / 1600 m<sup>3</sup>

Standard Product Data Sheet



Specification, Equipment Manufacturers and GA Plan of the vessel could be tailored fully as per Buyers' requirements.