

BUNKER BARGE / 1600 m³

Basic Specification

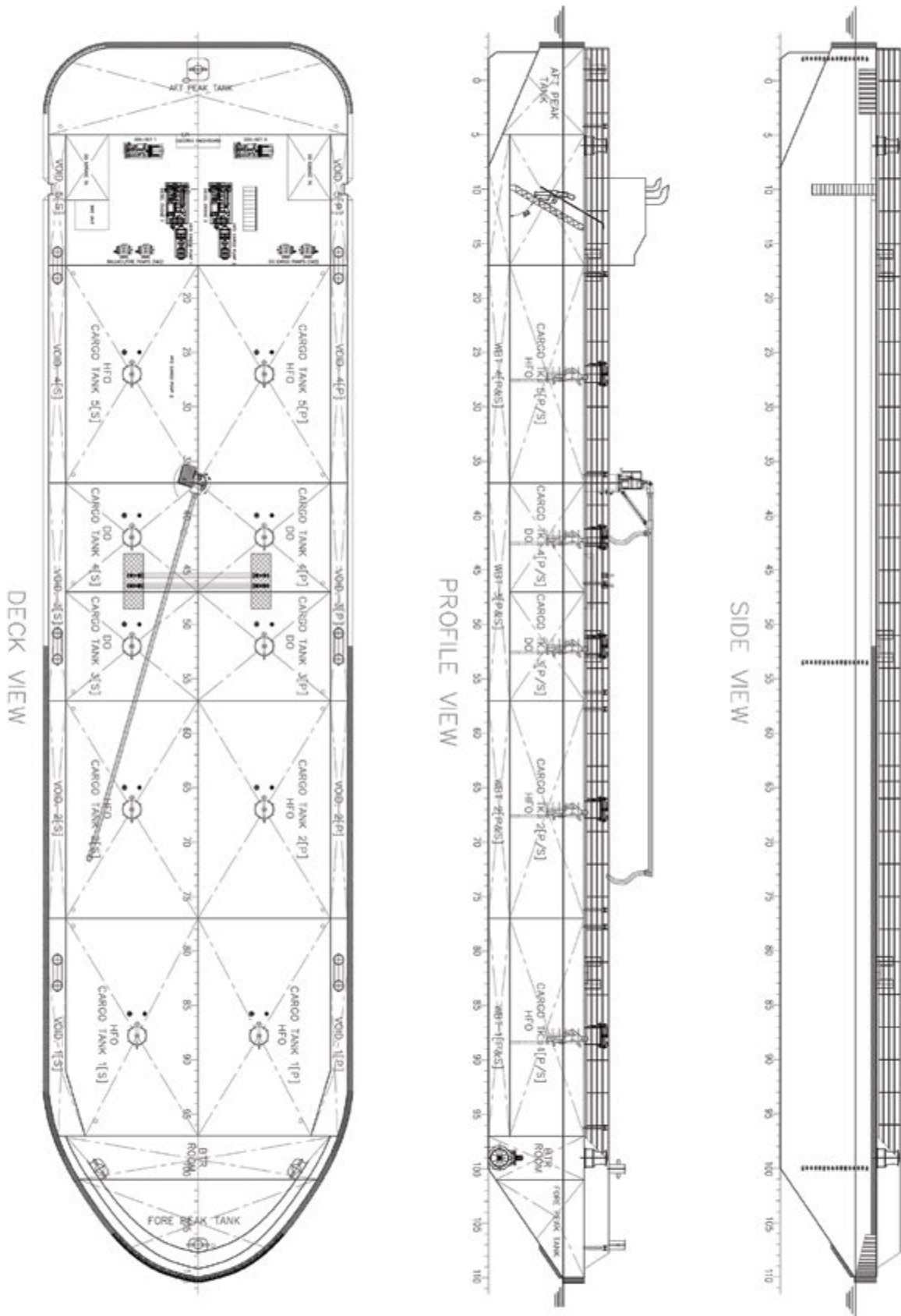


TYPE	: BUNKER BARGE
Capacity	: 1600 m ³
Loa (excl. fenders)	: 56.90 m
Breadth (excl. fenders)	: 14.00 m
Service Draft	: 3.50 m
Tank Volume	: 1600 m ³
Diesel Gen Set (2 off)	: 80 kW _e , 100 KVA
Diesel Engine (2 off)	: 136 kW _m @ 2100 rpm
(for HFO Cargo & Hyd. Pumps)	
Bow Thruster	: 160 kW, hyd. driven, FPP
Classification / Notation	: RINA
	C ⚡ HULL, OIL BARGE (F.P.>60 0C)
	International Coastal Navigation

Specification, Equipment Manufacturers and GA Plan of the vessel could be tailored fully as per Buyers' requirements.

BUNKER BARGE / 1600 m³

Basic Specification



Specification, Equipment Manufacturers and GA Plan of the vessel could be tailored fully as per Buyers' requirements.