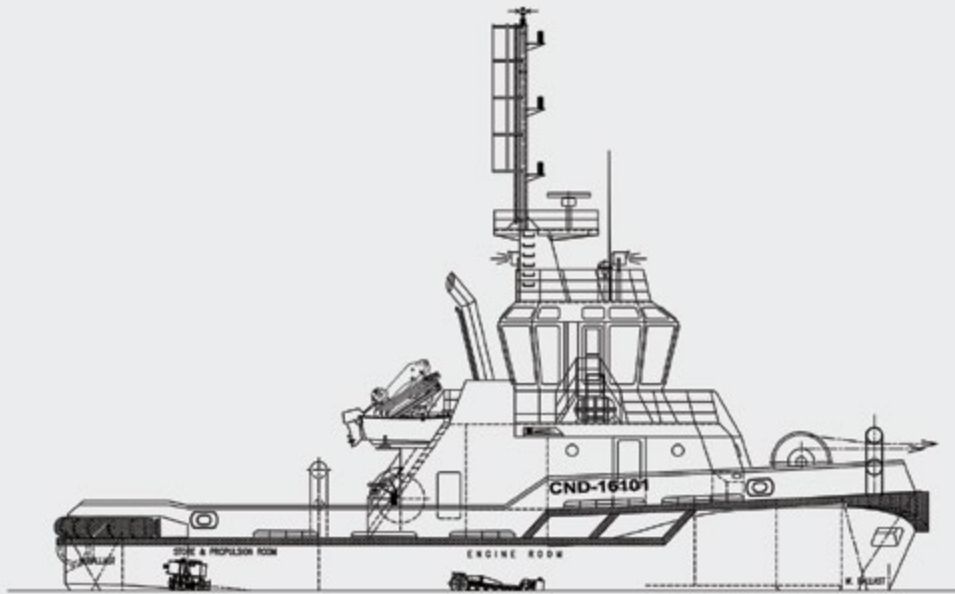


# BS50 SERIES / CND 26/50

Basic Specification

**BOGAZICI**

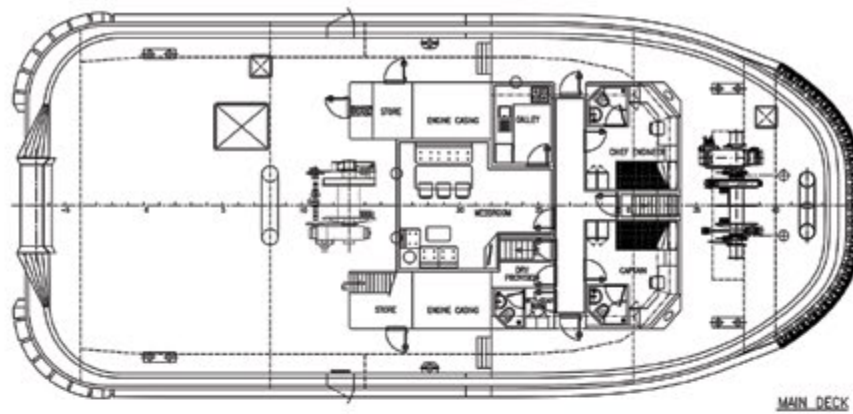
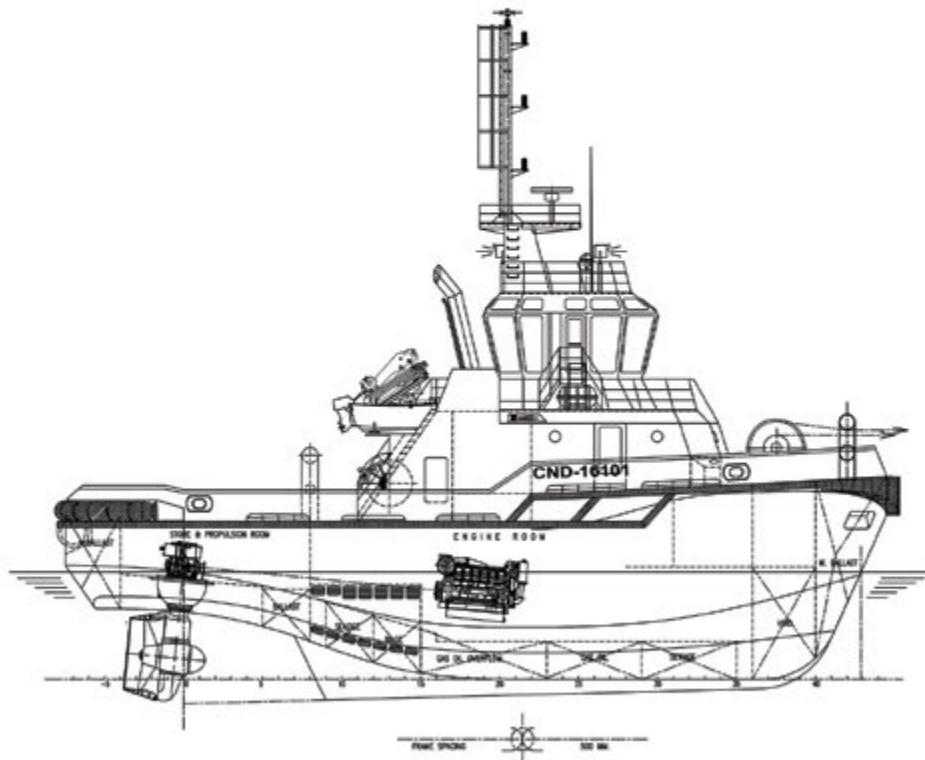


TYPE	: ASD TUG BOAT
Bollard Pull	: 50 Tbp
Designer	: CintranaVal Ship Design / Spain
Design	: CND 26/50
Loa	: 26.00 m
Beam Moulded	: 11.60 m
Draft (Max.)	: 4.60 m
Speed	: 12.5 Knots
Complement	: 6
Power	: 3000 kW Total (2 x 1500 kW)
Propulsion	: FP Fixed Pitch Propellers Azimuth Thrusters
Services / Capabilities	: Berthing and unberthing of vessels at hoarbour premises Towing services Pull and push during vessels mooring manoeuvrings Harbour tug services

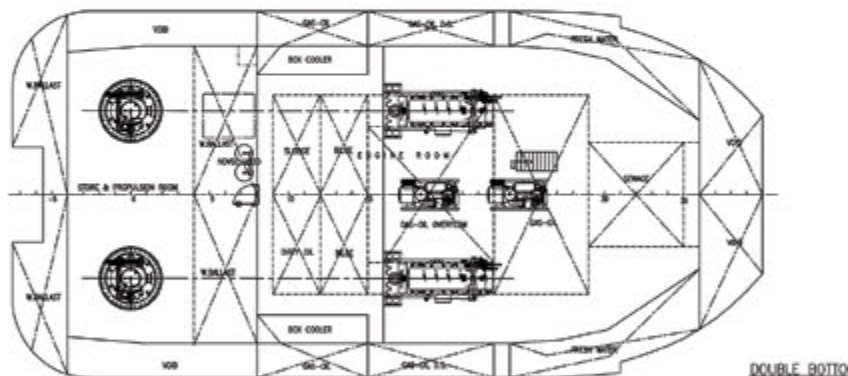
Specification, Equipment Manufacturers and GA Plan of the vessel could be tailored fully as per Buyers' requirements.

# BS50 SERIES / CND 26/50

Basic Specification



MAIN DECK



DOUBLE BOTTOM

Specification, Equipment Manufacturers and GA Plan of the vessel could be tailored fully as per Buyers' requirements.