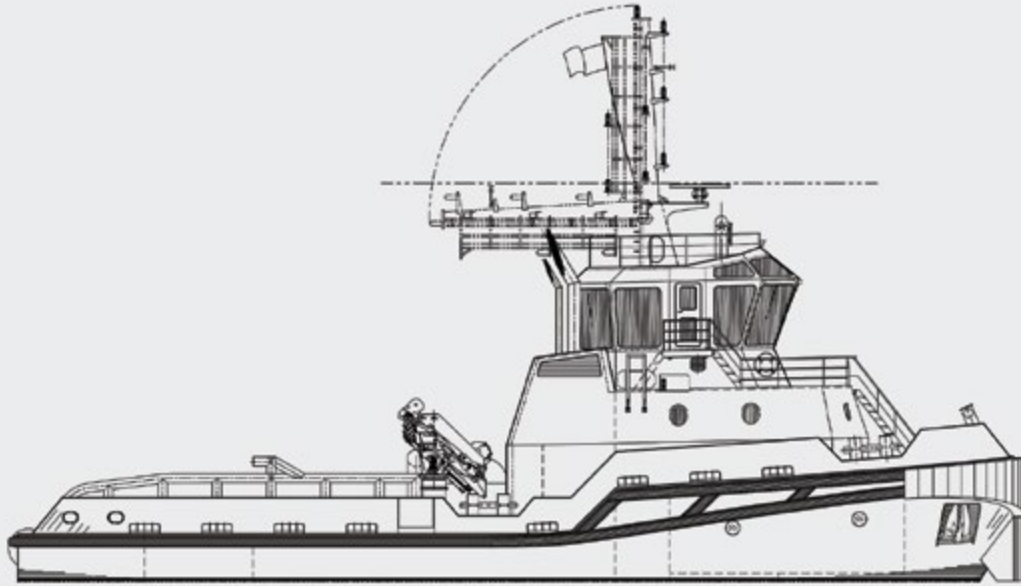


35 TBP Shallow Draft ICE 1B CONV. AHT

Basic Specification

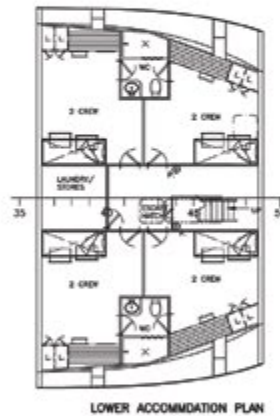
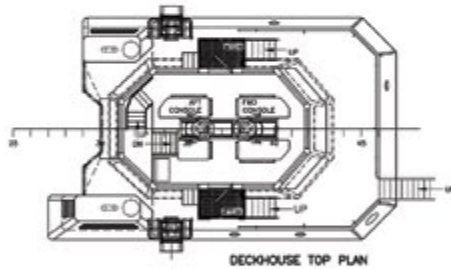
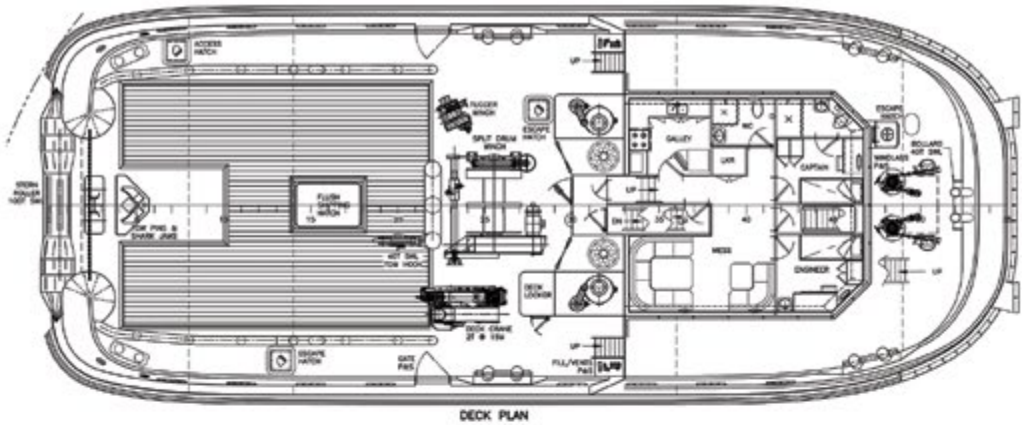
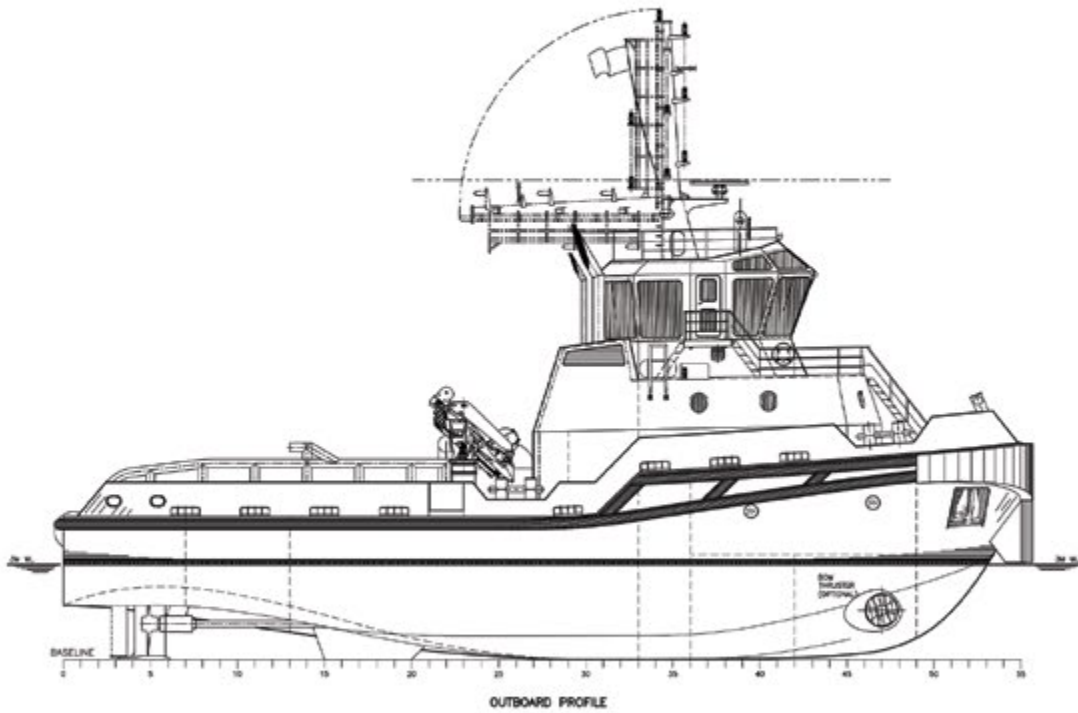


TYPE	: SHALLOW DRAFT ICE CLASS 1B CONVENTIONAL PROPULSION ANCHOR HANDLING TUG
Bollard Pull	: 35+ Tbp
Designer	: Robert Allan Ltd. / Canada
Design	: Shallow Draft Ice Class 1B Conventional Propulsion AH Tug with Push Horn
Loa	: 30.00 m
Beam Moulded	: 12.00 m
Draft Navigational	: 3.00 m
Speed	: 11.0 Knots
Complement	: 10
Power	: 2500 kW (3352 Bhp) Total
Propulsion	: Conventional Type Propulsion System FP Fixed Pitch Propellers Designed for ICE 1B Class
Services / Capabilities	: Berthing and unberthing of vessels at harbour premises, in also ice conditions Towing services, in also ice conditions Pull and push during vessels mooring manoeuvrings, in also ice conditions Open sea and harbour tug services, in also ice conditions

Specification, Equipment Manufacturers and GA Plan of the vessel could be tailored fully as per Buyers' requirements.

35 TBP Shallow Draft ICE 1B CONV. AHT

Basic Specification



Specification, Equipment Manufacturers and GA Plan of the vessel could be tailored fully as per Buyers' requirements.