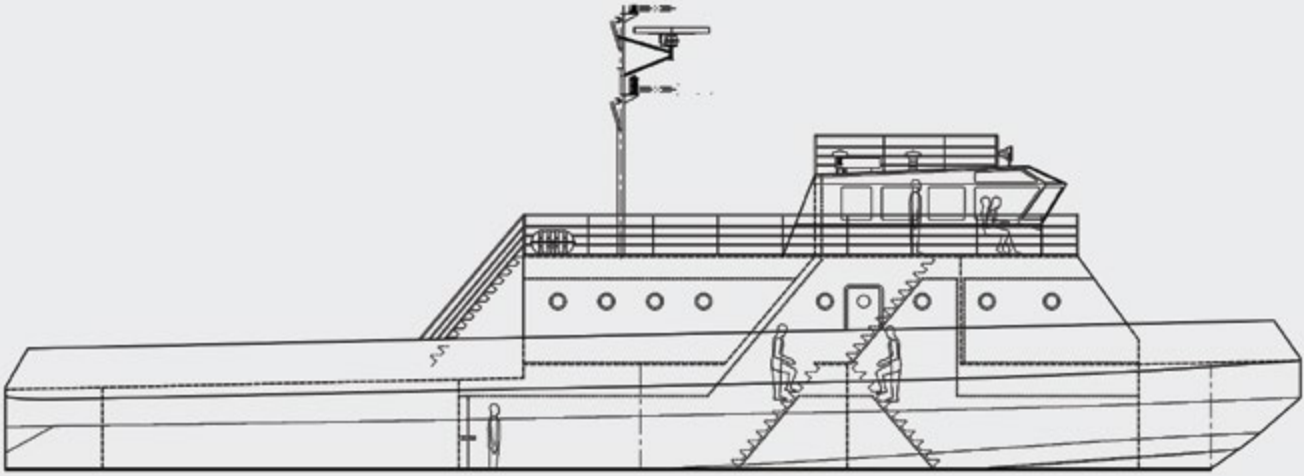


FAST CREW BOAT / 32 M

Standard Product Data Sheet

BOGAZICI



TYPE : FAST CREW BOAT
Designer : Barbaros Gemi Yaticilik / Turkey
Length Overall : 32.00 m
Breadth Moulded : 7.50 m
Depth : 2.35 m
Design Draft : 1.50 m

Capacities (approx.) : - Fuel : 10.0 m³
- Fresh Water : 25.0 m³
- Sewage : 6.0 m³
- Bilge Water : 4.0 m³

Speed : 20 knots

Bollard Pull : 70 tonnes

Services / Capabilities : Fast Coastal Services

Classification : (RINA) C \mp HULL \mp MACH, Tug,
Coastal Navigation Service

Main Engine : 3 x 515 kW, 2300 rpm
Total 1545 kW

Propulsion : FP Fixed Pitch Propellers

Diesel Generators : 2 x 80 kW, 1500 rpm
Ship Service DG Sets

Accommodation : Complement
38 (30 Passenger + 8 Crew)

Suit Cabins
2 WC & Shower

Cabins
3 doubles

Laundry
1

Shower
2

WC
4

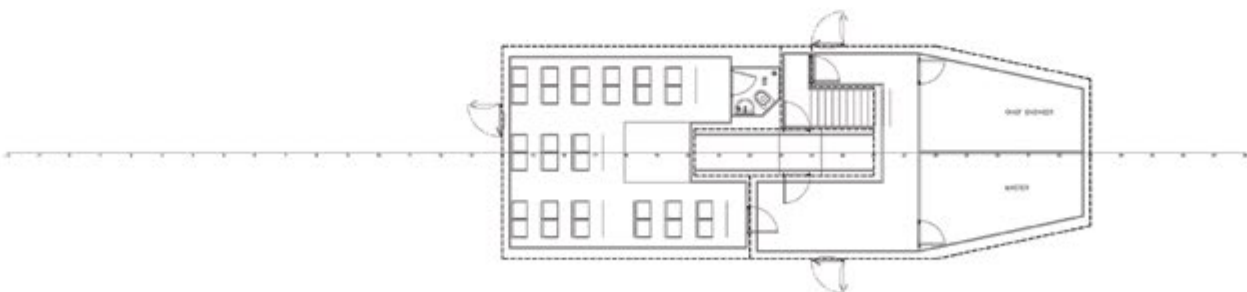
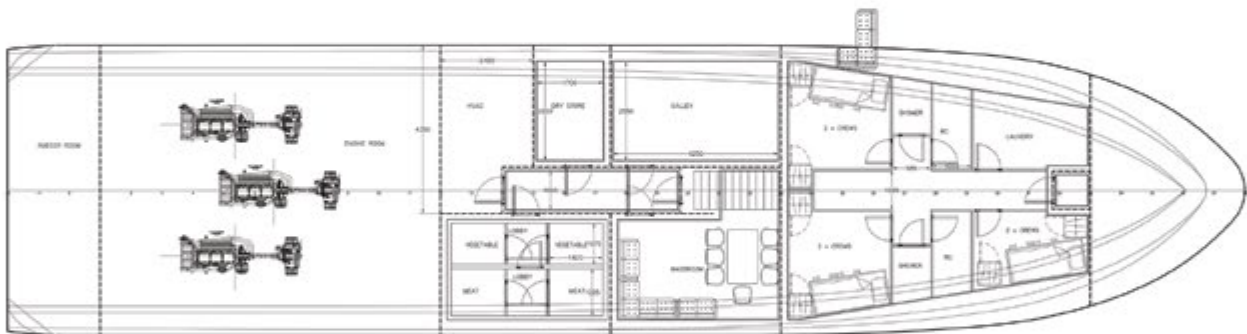
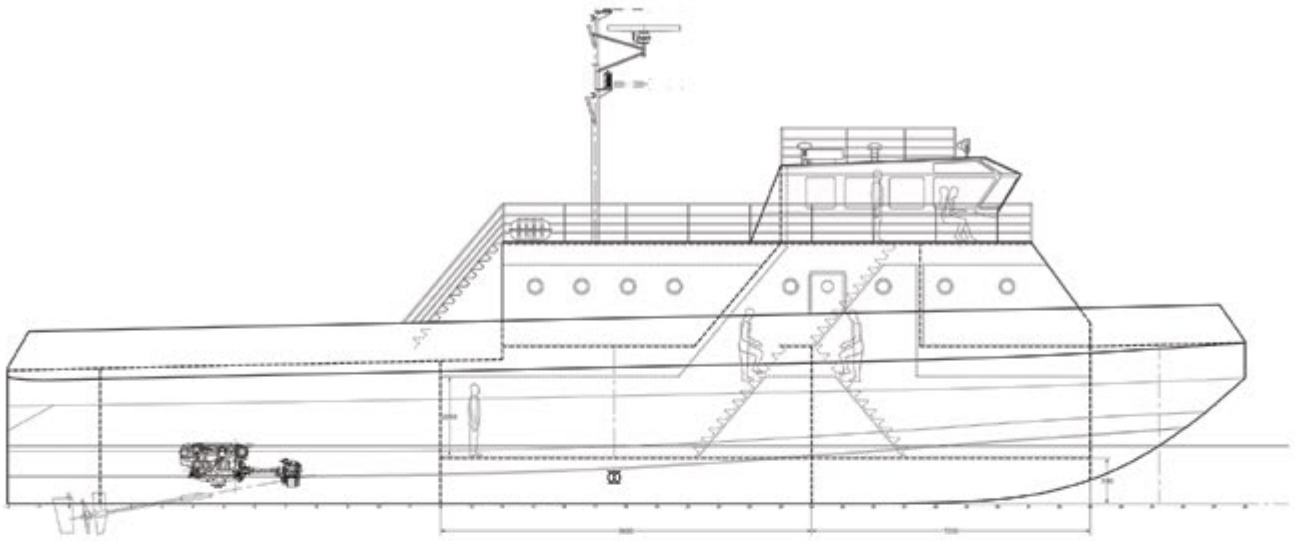
Refrigerated Stores
6

Air Conditioner
2

Specification, Equipment Manufacturers and GA Plan of the vessel could be tailored fully as per Buyers' requirements.

FAST CREW BOAT / 32 M

Standard Product Data Sheet



Specification, Equipment Manufacturers and GA Plan of the vessel could be tailored fully as per Buyers' requirements.